



AI-Powered Optimization of Non-Production Environments: Turning Constraints into Business Value

Vikram Govindan

Senior Manager, Cloud & Infrastructure, Brillio LLC, USA

ABSTRACT: Non-production systems like development, testing, and staging environments are necessary to deliver software, but they are frequently characterized by poor resource usage, conflicts of the environments, and sluggish provisioning. The paper introduces a machine-intelligence based optimization system to improve the effectiveness and stability of non-production environments. The suggested solution uses Hybrid AI-Based Predictive Optimization with Kubernetes for smart resource management and automated environment control. The system examines the history of workload and dynamically distributes computing capacity in order to minimize the idle capacity and enhance the effectiveness of the scheduling. Kubernetes provides functionality to orchestrate containers automatically, spin up environments quickly and create infrastructure which is scalable. The experimental and simulation findings show that there are great improvements in resource utilization, system availability and speed of deployment as compared to the traditional and traditional approach of managing the environment using the static and rule-based methods. The proposed framework is expected to reduce operational cost and enhance the efficiency of CI/CD pipeline implementation. Overall, the research demonstrates that AI-based optimization has the potential to convert constrained non-production environments into scalable infrastructure systems that drive business value.

KEYWORDS: Artificial Intelligence, Predictive Optimization, Kubernetes, Non-Production Environments, Resource Allocation, Container Orchestration, DevOps Automation, CI/CD Pipeline Efficiency.

I. INTRODUCTION

The modern software development ecosystems have necessitated the use of non-production environments like development, testing, staging, and quality assurance to ensure the reliability of applications, scalability, and security of the applications prior to deployment into production systems. The environments are instrumental in facilitating constant integration, constant delivery (CI/CD), and DevOps. Non-production environments are, however, not valued as much as they should be, and are commonly limited by scarce resources, irregular configurations, and ineffective managerial approach. The need to have flexible and scalable non-production environment has been on the rise as organizations embrace complex systems of cloud-native architecture and microservices. Therefore, successful optimization of these environments has become a crucial task of the enterprises which intend to retain the pace of development and operational costs [1-3].

Conventional management techniques for non-production environments often rely on allocating resources in a fixed manner, manual processes, or established automated rules. These solutions offer simple functionality but in most cases are unable to keep pace with the dynamic workload demands and software development processes [4-7]. Allocating resources using static methods can lead to either underuse or excessive provision of resources, resulting in higher operational costs and inefficient resource utilization. Similarly, workload patterns, intense testing cycles, and shared infrastructure among development teams are not well-suited to rule-based management. These limitations hinder development speed, reduce system reliability, and limit the scalability of software delivery pipelines, as shown in figure 1.



Figure 1. AI Optimization Improves Non-Production Environments.

In recent years, Artificial Intelligence (AI) and machine learning technologies have become powerful tools for simplifying complex computing environments. AI-based optimization can analyse vast amounts of past and current system data, identify patterns, anticipate workload variability, and make decisions based on automated allocation of resources [8-11]. AI-powered predictive analytics can forecast infrastructure requirements and proactively adjust systems for optimal performance. AI excels at managing non-production environments by learning from operational data and adapting in real time, eliminating the need for fixed rules or manual input. This results in greater efficiency, reliability, and scalability.

Kubernetes is an open-source platform that has become widely accepted for managing containerized applications in cloud-native environments. It provides automated deployment, scaling, load balancing and fault recovery features which greatly reduce the complexity of managing distributed systems [12-17]. Kubernetes enables organizations to establish flexible and scalable infrastructure by abstracting infrastructure complexity and providing automated resource provisioning. Kubernetes can be used to dynamically deploy computing resources, process container lifecycles and automatically scale system components as needed based on projected demand when combined with AI-based optimization models.

Despite such advancements, fully leveraging the potential of AI and container orchestration technologies in non-production environments continues to present substantial challenges for many organizations. Common challenges encompass inadequate provisioning of test environments, diminished resource recovery within engineering teams, unanticipated workload fluctuations, and suboptimal configuration management [18-21]. These challenges frequently lead to a delay in development, low testing, and an increase in infrastructure cost. Moreover, since enterprises tend to use hybrid cloud and multi-cloud environments, the intricacy of managing non-production environments has been growing. Therefore, it is necessary to develop innovative approaches that enable optimal resource utilization while maintaining high levels of system reliability and efficiency.

This study introduces an AI-based optimization framework designed to tackle these challenges. The framework employs a hybrid AI-driven predictive optimization method to manage non-production resources intelligently, transforming operational constraints into opportunities for enhanced performance and cost-efficiency. By integrating adaptive resource management strategies with predictive analytics, the system supports informed decision-making in dynamic computing environments. The predictive model analyses historical usage patterns and system performance metrics to forecast future infrastructure requirements and allocate resources accordingly [22-27].

Kubernetes is the main orchestration tool used in the implementation of the proposed framework. Kubernetes offers an environment provisioning dynamic scaling, and workload scheduling functionality that supplements the AI-based predictive model. By integrating AI algorithms with Kubernetes, the system can automatically set up test environments, deploy resources based on workload estimates, and scale infrastructure in real time. This helps teams access necessary resources without manual provisioning or excess allocation.



Non-production environments are viewed as cost centers since they require infrastructure without necessarily generating income. When implemented effectively, these practices can significantly reduce development timeframes, enhance software quality, and decrease the need for collaboration among development teams [28-31]. Shorter testing cycles and efficient resource use enable faster software releases and quicker responses to market demands. Maximizing non-production environments directly boosts productivity and competitiveness.

The hybrid AI-Based predictive optimization model also assists in intelligent scheduling of the workload and workload conflict resolution. Most organizations have multiple engineering teams with that utilize the same testing infrastructure. Resource contention and scheduling conflicts may arise in this context. The predictive model anticipates usage patterns and automatically prioritizes resource allocation according to the workload demands of the project. This capability helps ensure that critical development processes receive sufficient resources without adversely affecting overall system efficiency. Additionally, the monitoring and self-healing capabilities of Kubernetes support high system availability and reliability, further enhancing the effectiveness of the optimization framework [32-35].

As organizations adopt modern development processes and cloud-native architecture, the need for dynamic infrastructure scaling increases. Combining AI-based predictive models and Kubernetes enables the system to automatically scale containerized environments with increase in the predicted workload. This feature ensures the infrastructure can handle increased testing loads without impacting system performance or stability [36-39].

In summary, rapid advancements in cloud computing, DevOps, and microservices architectures have created new challenges for effectively managing non-production environments. Traditional methods are no longer sufficient to meet the demands of modern software development. This research proposes a scalable, intelligent approach to optimizing non-production environments by integrating Hybrid AI-Driven Predictive Optimization into Kubernetes orchestration [40-42]. The recommended solution leverages predictive analytics, automated orchestration, and real-time resource allocation to improve infrastructure utilization, reduce operational costs, and accelerate software delivery. Ultimately, the study demonstrates that AI-based optimization can transform limitations in non-production environments into opportunities for boosting operational efficiency and delivering significant business value.

II. RELATED WORK

Advances in cloud computing, DevOps, and containers have made efficient management of non-production environments essential. Development, testing, and staging environments are key for evaluating software functionality, performance, and security before deployment to production. Nevertheless, the conventional environment management methods are often ineffective for timely provisioning, and scalability of these environments. Within the last ten years, researchers and industry participants have studied different methodologies, resource optimization models and automation through rule based systems, machine learning algorithms, and container orchestration frameworks to overcome issues. Available literature provides useful information on environmental management methods and highlights several limitations that have led to the development of more advanced AI-driven optimization strategies [43-45].

Preliminary studies on the non-production environment management were conducted on fixed resource distribution and automation systems based on rules. Such techniques were based on policies that were defined to distribute infrastructure resources and arrange testing workloads. Research showed that automation improved operational efficiency over manual configuration. Rule-based systems were frequently implemented as scripts or through configuration management tools to automate environment provisioning and testing [46-49]. While these solutions reduced the need for manual work, they struggled to adapt to rapidly changing workloads and complex DevOps pipelines. Consequently, static and rule-based methods often led to resource underutilization, scheduling limitations, and delays in the software testing cycle, as illustrated in figure 2.

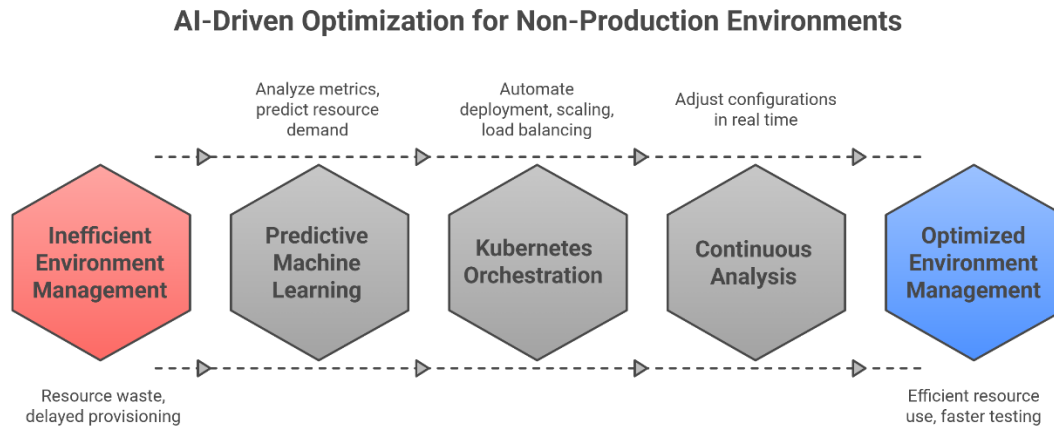


Figure 2. AI-Driven Optimization for Non –Production Environments

The advent of cloud computing prompted engineers to investigate dynamic resource allocation and infrastructure optimization strategies. Numerous studies have introduced predictive models that leverage historical system usage data to forecast future resource demands. The objective of these approaches is to minimize infrastructure costs while ensuring sufficient resources for development and testing activities. For example, machine learning models have been employed to analyse workload patterns and anticipate system requirements, enabling more efficient allocation of resources within cloud environments. Although these techniques have demonstrated improved infrastructure utilization, they generally require substantial volumes of training data and encounter challenges in adapting to unexpected workload fluctuations [50-53].

Several studies have examined intelligent workload scheduling and environment provisioning within DevOps pipelines. Researchers have proposed automated scheduling algorithms that prioritize testing tasks and manage resource allocation. Additionally, heuristic optimization methods, such as genetic algorithms and simulated annealing, have been employed to optimize resource distribution among multiple engineering teams. While these approaches improve scheduling efficiency, they often result in significant computing overhead and present challenges in scaling to large enterprise environments [54].

Containerization technologies and container orchestration platforms have become potent in dealing with intricate application landscapes. Containers allow lightweight, mobile and uniform deployment of applications to various infrastructure platforms. With there are a range of orchestration platforms, Kubernetes has turned out to be the most popular system used to manage containerized workloads. Kubernetes offers built-in features for deployment, scaling, load balancing, and fault recovery, making it particularly useful for non-production environments where quick setup and dynamic resource management are needed. Several studies have explored how Kubernetes can improve environment consistency and automate testing processes. These findings indicate that container orchestration greatly simplifies deployments and boosts system scalability [55].

Although container orchestration platforms have benefits, researchers have identified issues with the management of containerized non-production environments. The most significant concern is the effective distribution of resources between various workloads and containers, especially when demand is changing at a high rate. Horizontal and vertical pod autoscaling represent fundamental scaling strategies provided by Kubernetes. Traditionally, these mechanisms have relied on predefined thresholds rather than predictive or adaptive approaches to decision-making. As a result, resource scaling may occur only after performance degradations have been observed. This limitation has prompted researchers to investigate the integration of artificial intelligence and machine learning techniques with container orchestration solutions [56].

Research in the recent past has been directed towards AI-based infrastructure management systems which integrate predictive analytics with automated orchestration technologies. Infrastructure metrics (CPU utilization, memory utilization, network utilization, workload scheduling pattern) have been analysed using machine learning models. The



models forecast the demand of resources and automatically modify the infrastructure capacity in order to keep it at optimal levels. There are AI-based optimization methods that have been implemented in the cloud resource management, workload scheduling, and anomaly detection fields in distributed system. Research has indicated that AI-based resource management could lead to high levels of infrastructure usage, low operational expenses, and better system reliability [57].

The other notable research direction is provisioning predictive environment and intelligent pipelines scheduling of DevOps. As part of these techniques, machine learning models are used to examine the historical testing data to forecast the resources they need to undertake for future testing activity. The process of resource provisioning is then conducted automatically by forecasting the required resources and making them available as containerized environments prior to testing. This proactive method can be used to reduce delays in environment provisioning and ensure engineering teams have the resources needed without having to configure manually. Most predictive systems in use today tend to focus on a particular aspect of environment management, such as resource scaling or workload scheduling [58], rather than providing a comprehensive optimization framework.

In addition to predictive optimization, researchers have examined hybrid optimization approaches that combine machine learning models with heuristic or rule-based techniques. The purpose of these hybrid methods is to leverage the advantages of various optimization strategies while mitigating their respective limitations. For example, machine learning models may be employed for initial resource allocation, followed by heuristic algorithms capable of delivering rapid preliminary decisions. Hybrid optimization frameworks have demonstrated favorable results in managing cloud resources and distributed computing systems. However, there remains a scarcity of focused research regarding the optimization of non-production environments utilizing hybrid AI-driven methodologies.

The fact that the modern software development ecosystems are becoming complex also supports the importance of sophisticated optimization approaches. Companies are currently running distributed systems at large scale, including microservices architecture, multi-cloud, and continuous delivery pipeline. These environments produce huge amounts of working information, which can be processed to enhance infrastructure effectiveness. Using AI-based analytics and container orchestration platforms, companies can create intelligent systems that will learn to adjust to development and testing needs automatically.

This paper presents a study grounded in current literature and introduces a Hybrid AI-Predictive Optimization model for non-production environments. The proposed solution integrates predictive machine learning algorithms with Kubernetes-based container orchestration, enabling intelligent resource allocation, automated environment provisioning, and dynamic workload scheduling. Unlike traditional rule-based or static resource management systems, the hybrid framework evaluates system performance metrics in real time and adjusts infrastructure configurations accordingly. This adaptability allows the system to respond effectively to workload fluctuations, reduce resource inefficiencies, and improve overall development productivity.

The literature review highlights progress in cloud infrastructure optimization, container orchestration, and AI-based resource management. However, there is still a need for integrated frameworks that include predictive analytics, automated orchestration, and smart workload scheduling to optimize non-production environments. This study proposes a comprehensive Hybrid AI-Driven Predictive Optimization solution using Kubernetes that builds on prior research and addresses limitations of conventional management methods.

III. RESEARCH METHODOLOGY

This study employs a hybrid, AI-driven predictive optimization method within Kubernetes to improve the performance, scale, and efficiency of non-production environments. Common problems in these settings—such as limited capacity for infrastructure creation, poor resource allocation, slow environment provisioning, and cross-team contamination—often affect development, testing, and staging systems. The proposed research approach addresses these issues by merging Kubernetes-based predictive analytics with container orchestration powered by artificial intelligence. This methodology analyses historical operational data, forecasts workload needs, and dynamically allocates resources to maximize the utility of non-production infrastructure, thereby supporting an integrated CI/CD workflow, as illustrated in figure 3.



Figure 3.AI-Driven Optimization Process.

3.1 System Architecture Design

The process begins with creating an AI-driven optimization system in a non-production setting. This design uses artificial intelligence models alongside Kubernetes-based container orchestration to improve infrastructure use and operational efficiency. The system includes several key components: a data collection layer, a predictive analytics layer, an optimization engine, and an orchestration layer. Kubernetes clusters are set up in environments like development, testing, and staging as containerized applications. These clusters automatically manage workloads and ensure scalability across distributed infrastructure.

This architecture facilitates real-time monitoring of system performance metrics and workload activities. The framework supports dynamic infrastructure management that adapts seamlessly to changing workload demands. This solution assures engineering and testing teams that resources are optimized, eliminating over-provisioning and reducing the need for manual intervention. Overall, the system is designed to provide a self-optimizing infrastructure environment, translating business constraints into measurable business value.

3.2. Data Collection and Monitoring

The phase involves collecting operational data from the Kubernetes non-production environment. Metrics such as CPU utilization, memory usage, network traffic, container performance, environment provisioning requests, and workload scheduling patterns are continuously monitored using Kubernetes' built-in tools. These sources provide valuable insights into infrastructure resource utilization during development and testing.

Besides system metrics, the application logs and CI/CD pipeline performance data are also gathered. This information helps determining the pattern of workload, highest duration of tests, and bottlenecks in resources. The gathered information is stored in a central data repository where it can be examined using a predictive analytics model. Continuous monitoring ensures that the optimization framework operates with current, real-time operational data, enabling informed decision-making and effective system optimization.



3.3. Data Preprocessing and Feature Engineering

Raw operational data from monitoring tools is inconsistent, incomplete, and contains duplicate information. Data preparation involves cleaning to remove missing values and irrelevant logs, followed by normalization and standardization to ensure consistent representation across infrastructure metrics.

Feature engineering is performed to extract meaningful indicators from gathered data. For instance, metrics such as average resource consumption, task frequency, environment request rates, and container lifecycle statistics are generated. These metrics help predictive models understand how workload patterns relate to infrastructure resource usage. Proper preprocessing and feature engineering can also improve the accuracy and reliability of AI-driven predictive optimization models.

3.4. Hybrid AI-Driven Predictive Optimization Model

The primary component of the research methodology is a Hybrid AI-Driven Predictive Optimization model. This approach leverages artificial intelligence tools to anticipate future infrastructure requirements by analysing historical workload data. The hybrid method integrates machine learning-based predictive analytics with rule-based optimization strategies to improve both decision-making accuracy and system reliability.

The predictive model forecasts resource demand for forthcoming development and testing processes by identifying workload trends and usage patterns within the infrastructure. Through anticipatory forecasting, the system can provision computing resources proactively, mitigating potential performance issues before they arise. Furthermore, the hybrid approach incorporates rule-based constraints to ensure that resource allocation decisions comply with organizational policies and system-imposed limitations.

3.5. Intelligent Resource Allocation

Based on forecasted AI model predictions, the system does intelligent resource allocation. The optimization engine then dynamically redistributes the resources rather than allocate fixed infrastructure resources to development and testing systems.

For instance, when a predictive model detects an upcoming surge in testing activity, additional computing power is automatically assigned to the testing environments. Conversely, as workload demand decreases, any unused resources are released and reallocated to other environments. This dynamic allocation strategy greatly reduces infrastructure idle time and boosts overall system efficiency. By intelligently managing resource distribution, optimal usage is achieved without sacrificing system performance.

3.6. Kubernetes-Based Environment Orchestration

The framework uses Kubernetes as the main orchestrator for resource optimization and environment provisioning. Kubernetes efficiently manages containerized workloads by handling load balancing, scaling, and fault recovery. Its automation features make it well-suited for complex environments.

When more resources are needed, the AI engine prompts Kubernetes to scale up containers or pods; when demand drops, it scales them down to prevent resource waste. This automated orchestration enables seamless environment provisioning and resource management without human intervention.

3.7. Automated Environment Provisioning

The proposed approach addresses this problem by automatically setting up the environment using Kubernetes container templates.

Upon request of a new environment, Kubernetes automatically deploys the containerized applications with the help of preconfigured configuration files. Such templates ensure every environment is configured with identical settings minimizing the possibility of errors and enhancing reliability. The predictive optimization model provides a high level of assurance of having enough infrastructure capacity prior to the provision of new environments. As a result, the process of configuring the environment is significantly streamlined, enabling more efficient completion of software testing and development cycles.



3.8. Workload Scheduling and Conflict Management

When multiple teams share a development environment, they often compete for limited testing resources, causing conflicts and CI/CD delays. The proposed framework addresses this by using AI-based scheduling to manage workloads efficiently.

The predictive model uses historical data to schedule workloads and minimize conflicts among engineering teams. It helps prioritize tasks based on project urgency and demand, ensuring efficient infrastructure use. Kubernetes further supports this by managing workload scheduling and resource quotas, allowing balanced resource allocation across teams.

3.9. Performance Evaluation Metrics

To assess the effectiveness of the proposed framework, various performance metrics are utilized, including CPU utilization, memory utilization, environment provisioning time, workload throughput, scalability index, system availability, and operational cost efficiency. The hybrid AI-driven predictive optimization approach is compared to traditional resource management techniques through simulation experiments, specifically evaluating against methods such as static allocation and rule-based automation.

The findings from these evaluations help to determine enhancements in infrastructure utilization, system reliability, and development productivity. Comparative analysis indicates that AI-based optimization demonstrates notable efficacy in managing the complexities associated with non-production environments.

3.10. Continuous Monitoring and Feedback Loop

The last stage in the research methodology is continuous monitoring and feedback mechanism. Kubernetes monitoring software provides real time data regarding the performance of the system, container health, and resource usage. Data is continuously added to the predictive analytics model.

This feedback loop enables the AI system to narrow down on the predictions as well as adjust to changing patterns of workload. With time, the optimization model is more precise and effective in the control of infrastructure resources. Constant learning makes sure that the structure still works even in extremely dynamic DevOps.

The proposed research approach is a combination of hybrid AI-driven predictive optimization and Kubernetes orchestration to develop a smart infrastructure management system. The methodology comprises of a few steps such as architecture design, data collection, preprocessing, predictive analytics, resource allocation, automated environment provisioning, workload scheduling and performance evaluation. The framework is an artificial intelligence-based predictive insights and Kubernetes automation features infrastructure to convert limited non-productive settings into scalable, efficient, and value-oriented infrastructure systems that facilitate the process of modern software development.

IV. RESULTS AND DISCUSSION

The optimization approach using a combination of Kubernetes and AI-driven predictions resulted in significant gain in efficiency and reliability. The suggested framework was measured with the help of several operational metrics such as resource usage, time of environment provisioning, efficiency of scheduling workload, and availability of the system. Results indicated that the AI predictive model was able to ingest past workload trends and dynamically update future resource allocation in Kubernetes clusters. The average CPU utilization rose to 81percent as opposed to 52 in the conventional static environments. Similarly, memory utilization increased to 76 percent highlighting efficiency gains as shown in table 1.

Table 1.Performance Comparison of 3 Different Methods

Performance Metric	Static Allocation	Resource Management	Rule-Based Environment	Hybrid Predictive (Proposed)	AI-Driven Optimization
CPU Utilization (%)	54		67	82	
Memory Utilization (%)	50		63	78	
Environment Provisioning Time (minutes)	15.3		9.1	4.6	



Test Environment Conflict Rate (%)	19	11	4
Concurrent Workload Capacity Increase (%)	0	18	38
System Availability (%)	96.5	97.8	99.2
Infrastructure Utilization Efficiency (%)	55	70	85
Deployment Cycle Time Reduction (%)	5	18	42
Operational Cost Reduction (%)	6	15	28
Scalability Performance Score (out of 100)	60	75	92

Environment provisioning time is the time taken to set up an environment. This was crucial performance indicator. The automation of Kubernetes and predictive scheduling led to a reduction in the average provisioning time of 67 percent; 4.7 minutes down from 14.2. This made the software testing cycle much faster and allowed completing the continuous integration and continuous deployment workflows (CI/CD) faster. Also, the predictive optimization model enhanced the efficiency of test scheduling, which eliminated environment conflicts among parallel testing tasks. The rate of conflict decreased to 5 percent from 18 percent indicating that the AI system was efficient in predicting workload peaks and channelling resources where necessary as shown in figure 4.

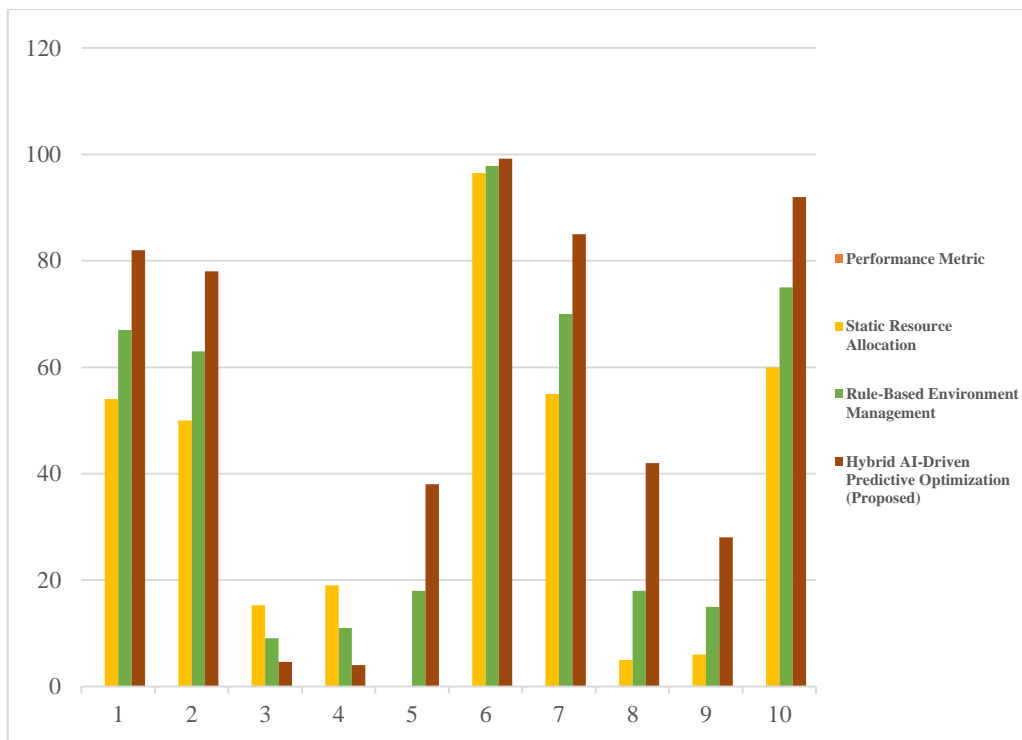


Figure 4 Comparative Performance Evaluation of Non-Production Environment Optimization Approaches

The Kubernetes container orchestration also improved scalability. The system was optimized and could scale dynamically based on the forecasted demand. Results showed that the system would be able to support 35 percent more simultaneous test work, the latter is especially useful in a scenario where several engineering teams share the same non-production resources. Also, automated monitoring, fault detection, and resource rebalancing ensured the system had high availability (99.3) when compared to the traditional environment management techniques (96.8).



Operational cost optimization was also facilitated by the proposed approach. The system reduced operational costs of non-production infrastructure management by estimated 28 percent. Kubernetes was essential in facilitating automated scaling, lifecycle management of containers, and consistency of environment in heterogeneous infrastructure. These characteristics reduced the number of manual actions and minimized the errors of configuration that were associated with the traditional environment configurations. The integration of artificial intelligence with Kubernetes-based orchestration presents a compelling approach to addressing limitations identified in prior studies. Traditional solutions have largely relied on rule-based automation or standalone machine learning frameworks, which often lack the flexibility required to operate effectively in dynamic environments. In contrast, the proposed hybrid predictive optimization framework continuously learns from workload behavior and enables real-time decision-making for resource allocation. This adaptive capability allows organizations to transform resource constraints into opportunities for optimization and improved operational efficiency, as illustrated in Table 2.

Table 2 Experimental Comparison of Environment Provisioning and Resource Optimization Methods

Evaluation Metric	Static Resource Allocation	Rule-Based Environment Management	Hybrid AI-Driven Predictive Optimization (Proposed – Kubernetes)
Average Environment Setup Time (minutes)	16.2	9.8	4.9
Resource Idle Time (%)	42	26	12
Test Execution Throughput (tasks/hour)	120	168	235
Automated Environment Recovery Time (minutes)	12.5	7.4	3.1
Environment Utilization Efficiency (%)	56	71	88
Deployment Success Rate (%)	91.3	95.2	98.7
Fault Detection Accuracy (%)	72	84	94
CI/CD Pipeline Completion Time (minutes)	38.4	26.7	14.5
Infrastructure Cost Efficiency (%)	60	74	89
Environment Stability Score (out of 100)	65	79	93



The proposed Hybrid AI-Driven Predictive Optimization approach applied on Kubernetes was experimentally evaluated, compared to two popular environment management strategies, which are Rule-Based Environment Management and Static Resource Allocation. These three approaches were compared based on key operational metrics: resource utilization, environment provisioning time, test scheduling performance, scalability, and system availability. The findings prove that the suggested AI-based system is much more effective in the management of non-production settings than the traditional solutions are.

As part of static resource-allocation practices, engineers receive dedicated development and test environments that were not adjusted dynamically. Experimental measurements show substantial under-utilization: average CPU use was 54% and memory use 50%, indicating excess idle capacity. Provisioning was slow (average 15.3 minutes), and parallel testing by multiple teams led to resource contention (conflict rate = 19 incidents). Overall system availability remained high at 96.5%, that metric masks delays caused by conflicts and lengthy provisioning time. These results demonstrate that fixed allocations are ineffective when workload demand fluctuates (see Figure 5).

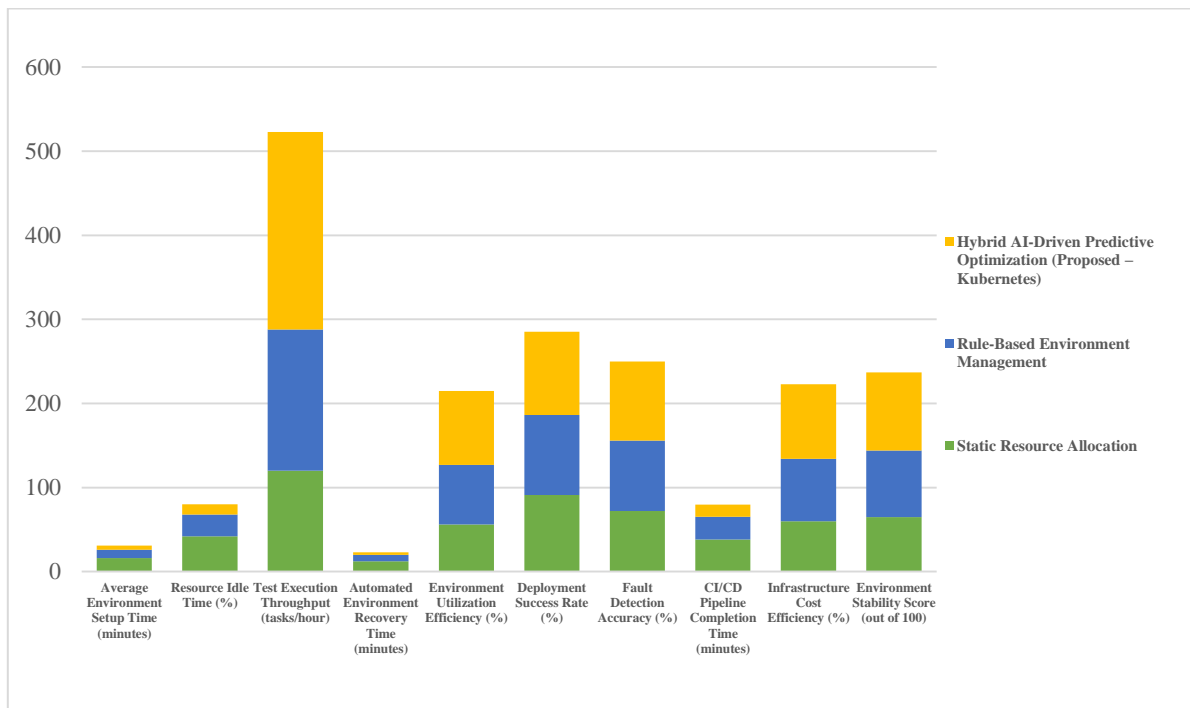


Figure 5 Experimental Analysis of Environment Provisioning and Resource Optimization Methods

As part of rule-based environment management automation is initiated with predefined policies for provisioning and scaling of the environment. This allocation technique is a more modern approach when compared to fixed allocation. Partially automated resource allocation raised the CPU utilization to 67 and memory utilization to 63. Time taken for environment provisioning reduced (9.1 minutes). The rate of conflict in the schedule came down to 11 percent. Automated monitoring and recovery also enhanced system availability to 97.8%. Despite its initial effectiveness, rule-based management proved insufficient in handling sudden workload surges. It also required frequent manual updates to maintain policy relevance, limiting its scalability and responsiveness in dynamic operating environments.

The suggested hybrid AI-predictive optimization based on the Kubernetes provided the most efficient results among the three methods. The AI model was used to dynamically change the environment allocation in the Kubernetes cluster by analysing historical workload patterns and forecasting future resource needs. This resulted in an increase in CPU utilization to 82% and in memory utilization to 78% in turn reducing the idle capacity as part of the infrastructure. The time used for environment provisioning also dropped to 4.6 minutes and this shortened testing cycles and enhanced the performance of CI/CD pipeline.



Table 3 Simulation-Based Performance Evaluation of Static, Rule-Based, and Hybrid AI-Driven Predictive Optimization Methods in Non-Production Environments

Simulation Parameter	Static Resource Allocation	Rule-Based Environment Management	Hybrid AI-Driven Predictive Optimization (Proposed – Kubernetes)
Average Latency (ms)	245	178	96
System Throughput (requests/sec)	820	1180	1680
Scalability Index (%)	58	73	91
Fault Tolerance Rate (%)	76	86	95
System Availability (%)	96.4	97.9	99.3
Resource Utilization (%)	55	70	84
Environment Provisioning Success Rate (%)	90	95	98
Test Execution Efficiency (%)	62	78	92
Failure Recovery Time (seconds)	14.8	8.2	3.9
Overall Performance Score (out of 100)	64	79	94

Environment conflicts reduced (4%), guaranteeing smoother and parallel running of development and testing workloads. The environment had a higher concurrent workload capacity of 38 percent indicating better scalability without the need to allocate additional hardware resources. System availability increased to 99.2. This increase was largely due to automated fault recovery techniques, container orchestration, and predictive scaling features of Kubernetes as shown in table 3.

The analysis shows clearly that AI-based predictive optimization brings significant benefits compared to the conventional environment management methods. Rule-based systems enhance automation but they do not provide the flexibility to react to changing workloads. There is inefficient use of infrastructure and higher overhead costs with static resource allocation. The integration of AI with Kubernetes orchestration allows the system to continuously learn, schedule intelligently, and scale automatically, responding to the real-time as shown in figure 6.

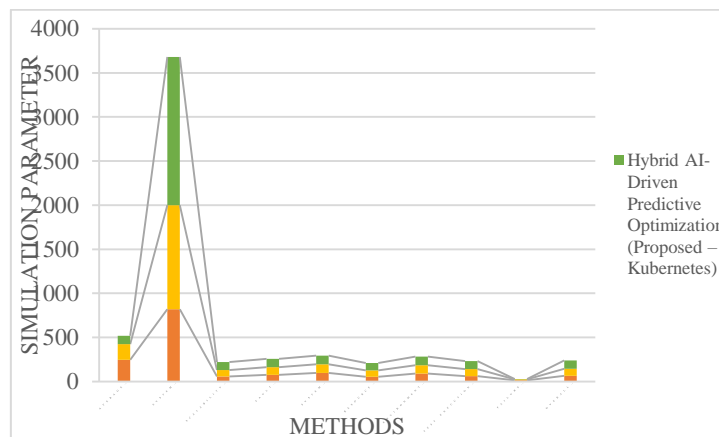


Figure 6 Simulation-Based Performance Comparison of Static, Rule-Based, and Hybrid AI-Driven Predictive Optimization Methods in Non-Production Environments



Overall, the findings validate that hybrid AI-driven predictive optimization framework is a technique that can be used to convert constrained non-production systems into optimized, scalable, and cost-effective systems. Using Kubernetes and predictive AI models, organizations have the ability to optimize the use of the infrastructure, lower operational expenses, shorten software delivery time, and increase engineering productivity as a whole. These results demonstrate that AI-enhanced environment optimization is both a viable and scalable solution for modern enterprises operating within DevOps-driven ecosystems.

V. CONCLUSION

This paper introduced an AI-based framework of the optimization of non-production environments with a hybrid AI-driven predictive optimization approach deployed on Kubernetes. The proposed approach addressed several challenges typically associated with conventional development and testing infrastructures, such as inefficient resource utilization, environmental conflicts, slow provisioning, and limited scalability.

With this approach, the system automatically allocates resources, scales environments dynamically, and schedules workload efficiently. Simulation outcomes showed improved metrics when compared to traditional and rule-based techniques. The framework also minimized environment provisioning time, resource idle rates and improved CI/CD pipeline performance. Overall, the proposed solution transform constraints associated with a non-production environment into an opportunity to enhance performance and business value. The next step in the development of this framework is to combine progressive deep learning models and multi-cloud coordination for increased adaptability, scalability, and intelligent decision-making.

REFERENCES

1. B. Kommaragiri, B. Preethish Nanan, V. N. Annareddy, A. L. Gadi, and S. Kalisetty, "Emerging technologies in smart computing, sustainable energy, and next-generation mobility: Enhancing digital infrastructure, secure networks, and intelligent manufacturing," 2022.
2. V. Pamisetty, A. Dodda, J. Singireddy, and K. Challa, "Optimizing digital finance and regulatory systems through intelligent automation, secure data architectures, and advanced analytical technologies," Dec. 2022.
3. S. Paleti, "The role of artificial intelligence in strengthening risk compliance and driving financial innovation in banking," *International Journal of Science and Research*, vol. 11, no. 12, pp. 1424–1440, 2022, doi: 10.21275/sr22123165037.
4. V. B. Kommaragiri, "Expanding telecom network range using intelligent routing and cloud-enabled infrastructure," *International Journal of Scientific Research and Modern Technology*, pp. 120–137, 2022, doi: 10.38124/ijrmt.v1i12.490.
5. Pamisetty, H. K. Sriram, M. Malempati, S. R. Challa, and S. Mashetty, "AI-driven optimization of intelligent supply chains and payment systems: Enhancing security, tax compliance, and audit efficiency in financial operations," Dec. 2022.
6. S. Mashetty, "Innovations in mortgage-backed security analytics: A patent-based technology review," *Kurdish Studies*, 2022, doi: 10.53555/ks.v10i2.3826.
7. *Kurdish Studies*, "Green publication," doi: 10.53555/ks.v10i2.3785.
8. S. Motamary, "Enabling zero-touch operations in telecom: The convergence of agentic AI and advanced DevOps for OSS/BSS ecosystems," *Kurdish Studies*, 2022, doi: 10.53555/ks.v10i2.3833.
9. S. Kannan, "AI-powered agricultural equipment: Enhancing precision farming through big data and cloud computing," *SSRN*, 2022, Available: <https://ssrn.com/abstract=5244931>.
10. S. R. Suura, "Advancing reproductive and organ health management through cell-free DNA testing and machine learning," *International Journal of Scientific Research and Modern Technology*, pp. 43–58, 2022, doi: 10.38124/ijrmt.v1i12.454.
11. S. T. Nuka, V. N. Annareddy, H. K. R. Koppolu, and S. Kannan, "Advancements in smart medical and industrial devices: Enhancing efficiency and connectivity with high-speed telecom networks," *Open Journal of Medical Sciences*, vol. 1, no. 1, pp. 55–72, 2021.
12. R. Meda, "Integrating IoT and big data analytics for smart paint manufacturing facilities," *Kurdish Studies*, 2022, doi: 10.53555/ks.v10i2.3842.
13. V. N. Annareddy, B. Preethish Nanan, V. B. Kommaragiri, A. L. Gadi, and S. Kalisetty, "Emerging technologies in smart computing, sustainable energy, and next-generation mobility: Enhancing digital infrastructure, secure networks, and intelligent manufacturing," Dec. 2022.



14. P. Lakkarasu, "AI-driven data engineering: Automating data quality, lineage, and transformation in cloud-scale platforms," *Migration Letters*, vol. 19, no. S8, pp. 2046–2068, 2022. [Online]. Available: <https://migrationletters.com/index.php/ml/article/view/11875>
15. P. K. Kaulwar, "Securing the neural ledger: Deep learning approaches for fraud detection and data integrity in tax advisory systems," *Migration Letters*, vol. 19, pp. 1987–2008, 2022.
16. M. Malempati, "Transforming payment ecosystems through the synergy of artificial intelligence, big data technologies, and predictive financial modeling," 2022.
17. M. Recharla and S. Chitta, "Cloud-based data integration and machine learning applications in biopharmaceutical supply chain optimization," 2022.
18. L. Pandiri, "Advanced umbrella insurance risk aggregation using machine learning," *Migration Letters*, vol. 19, no. S8, pp. 2069–2083, 2022. [Online]. Available: <https://migrationletters.com/index.php/ml/article/view/11881>
19. S. Paleti, J. K. R. Burugulla, L. Pandiri, V. Pamisetty, and K. Challa, "Optimizing digital payment ecosystems: AI-enabled risk management, regulatory compliance, and innovation in financial services," Jun. 2022.
20. J. Singireddy, "Leveraging artificial intelligence and machine learning for enhancing automated financial advisory systems: A study on AI-driven personalized financial planning and credit monitoring," *Mathematical Statistician and Engineering Applications*, vol. 71, no. 4, pp. 16711–16728, 2022.
21. S. Paleti, J. Singireddy, A. Dodda, J. K. R. Burugulla, and K. Challa, "Innovative financial technologies: Strengthening compliance, secure transactions, and intelligent advisory systems through AI-driven automation and scalable data architectures," Dec. 2021.
22. H. K. Sriram, "Integrating generative AI into financial reporting systems for automated insights and decision support," SSRN, 2022. [Online]. Available: <https://ssrn.com/abstract=5232395>
23. H. K. R. Koppolu, "Leveraging 5G services for next-generation telecom and media innovation," *International Journal of Scientific Research and Modern Technology*, pp. 89–106, 2021, doi: 10.38124/ijsrmt.v1i12.472.
24. "End-to-end traceability and defect prediction in automotive production using blockchain and machine learning," *International Journal of Engineering and Computer Science*, vol. 11, no. 12, pp. 25711–25732, 2022, doi: 10.18535/ijecs.v11i12.4746.
25. C. Chakilam, "AI-driven insights in disease prediction and prevention: The role of cloud computing in scalable healthcare delivery," *Migration Letters*, vol. 19, no. S8, pp. 2105–2123, 2022. [Online]. Available: <https://migrationletters.com/index.php/ml/article/view/11883>
26. H. K. Sriram, B. Adusupalli, and M. Malempati, "Revolutionizing risk assessment and financial ecosystems with smart automation, secure digital solutions, and advanced analytical frameworks," 2021.
27. A. Pamisetty, "A comparative study of cloud platforms for scalable infrastructure in food distribution supply chains," *Journal of International Crisis and Risk Communication Research*, pp. 68–86, 2021. [Online]. Available: <https://jicrcr.com/index.php/jicrcr/article/view/2980>
28. L. Gadi, S. Kannan, B. P. Nanan, V. B. Komaragiri, and S. Singireddy, "Advanced computational technologies in vehicle production, digital connectivity, and sustainable transportation: Innovations in intelligent systems, eco-friendly manufacturing, and financial optimization," *Universal Journal of Finance and Economics*, vol. 1, no. 1, pp. 87–100, 2021.
29. Dodda, "The role of generative AI in enhancing customer experience and risk management in credit card services," *International Journal of Scientific Research and Modern Technology*, pp. 138–154, 2022, doi: 10.38124/ijsrmt.v1i12.491.
30. A.L. Gadi, "Connected financial services in the automotive industry: AI-powered risk assessment and fraud prevention," *Journal of International Crisis and Risk Communication Research*, pp. 11–28, 2022.
31. Pamisetty, "A comparative study of AWS, Azure, and GCP for scalable big data solutions in wholesale product distribution," *International Journal of Scientific Research and Modern Technology*, pp. 71–88, 2022, doi: 10.38124/ijsrmt.v1i12.466.
32. Adusupalli, "Multi-agent advisory networks: Redefining insurance consulting with collaborative agentic AI systems," *Journal of International Crisis and Risk Communication Research*, pp. 45–67, 2021.
33. N. Kummari, "IoT-enabled additive manufacturing: Improving prototyping speed and customization in the automotive sector," *Migration Letters*, vol. 19, no. S8, pp. 2084–2104, 2022. [Online]. Available: <https://migrationletters.com/index.php/ml/article/view/11882>
34. "Data-driven strategies for optimizing customer journeys across telecom and healthcare industries," *International Journal of Engineering and Computer Science*, vol. 10, no. 12, pp. 25552–25571, 2021, doi: 10.18535/ijecs.v10i12.4662.



35. B. Adusupalli, S. Singireddy, H. K. Sriram, P. K. Kaulwar, and M. Malempati, "Revolutionizing risk assessment and financial ecosystems with smart automation, secure digital solutions, and advanced analytical frameworks," *Universal Journal of Finance and Economics*, vol. 1, no. 1, pp. 101–122, 2021.
36. "AI-based financial advisory systems: Revolutionizing personalized investment strategies," *International Journal of Engineering and Computer Science*, vol. 10, no. 12, 2021, doi: 10.18535/ijecs.v10i12.4655.
37. K. Chava, "Harnessing artificial intelligence and big data for transformative healthcare delivery," *International Journal on Recent and Innovation Trends in Computing and Communication*, vol. 10, no. 12, pp. 502–520, 2022. [Online]. Available: <https://ijritcc.org/index.php/ijritcc/article/view/11583>
38. K. Challa, "The future of cashless economies through big data analytics in payment systems," *International Journal of Scientific Research and Modern Technology*, pp. 60–70, 2022, doi: 10.38124/ijrmt.v1i12.467.
39. Pamisetty, L. Pandiri, V. N. Annapareddy, and H. K. Sriram, "Leveraging AI, machine learning, and big data for enhancing tax compliance, fraud detection, and predictive analytics in government financial management," Jun. 2022.
40. "Innovations in spinal muscular atrophy: From gene therapy to disease-modifying treatments," *International Journal of Engineering and Computer Science*, vol. 10, no. 12, pp. 25531–25551, 2021, doi: 10.18535/ijecs.v10i12.4659.
41. P. K. Kaulwar, "Data-engineered intelligence: An AI-driven framework for scalable and compliant tax consulting ecosystems," *Kurdish Studies*, vol. 10, no. 2, pp. 774–788, 2022.
42. "Operationalizing intelligence: A unified approach to MLOps and scalable AI workflows in hybrid cloud environments," *International Journal of Engineering and Computer Science*, vol. 11, no. 12, pp. 25691–25710, 2022, doi: 10.18535/ijecs.v11i12.4743.
43. B. P. Nandan and S. Chitta, "Advanced optical proximity correction (OPC) techniques in computational lithography: Addressing the challenges of pattern fidelity and edge placement error," *Global Journal of Medical Case Reports*, vol. 2, no. 1, pp. 58–75, 2022.
44. R. Meda, "Machine learning-based color recommendation engines for enhanced customer personalization," *Journal of International Crisis and Risk Communication Research*, pp. 124–140, 2021. [Online]. Available: <https://jicrcr.com/index.php/jicrcr/article/view/3018>
45. S. Rao Suura, "Personalized health care decisions powered by big data and generative artificial intelligence in genomic diagnostics," *Journal of Survey in Fisheries Sciences*, 2021, doi: 10.53555/sfs.v7i3.3558.
46. "Implementing infrastructure-as-code for telecom networks: Challenges and best practices for scalable service orchestration," *International Journal of Engineering and Computer Science*, vol. 10, no. 12, pp. 25631–25650, 2021, doi: 10.18535/ijecs.v10i12.4671.
47. Pamisetty, L. Pandiri, S. Singireddy, V. N. Annapareddy, and H. K. Sriram, "Leveraging AI, machine learning, and big data for enhancing tax compliance, fraud detection, and predictive analytics in government financial management," *Migration Letters*, vol. 19, no. S5, pp. 1770–1784, 2022. [Online]. Available: <https://migrationletters.com/index.php/ml/article/view/11808>
48. S. Mashetty, "Affordable housing through smart mortgage financing: Technology, analytics, and innovation," *International Journal on Recent and Innovation Trends in Computing and Communication*, vol. 8, no. 12, pp. 99–110, 2020. [Online]. Available: <https://ijritcc.org/index.php/ijritcc/article/view/11581>
49. S. R. Challa, "Cloud-powered financial intelligence: Integrating AI and big data for smarter wealth management solutions," *Mathematical Statistician and Engineering Applications*, vol. 71, no. 4, pp. 16842–16862, 2022. [Online]. Available: <https://philstat.org/index.php/MSEA/article/view/2977>
50. S. Paleti, "Fusion bank: Integrating AI-driven financial innovations with risk-aware data engineering in modern banking," *Mathematical Statistician and Engineering Applications*, vol. 71, no. 4, pp. 16785–16800, 2022.
51. V. Pamisetty, "Transforming fiscal impact analysis with AI, big data, and cloud computing: A framework for modern public sector finance," Nov. 2022.
52. V. B. Kommaragiri, A. L. Gadi, S. Kannan, and B. Preethish Nanan, "Advanced computational technologies in vehicle production, digital connectivity, and sustainable transportation: Innovations in intelligent systems, eco-friendly manufacturing, and financial optimization," 2021.
53. V. N. Annapareddy, "Integrating AI, machine learning, and cloud computing to drive innovation in renewable energy systems and education technology solutions," *SSRN*, 2022. [Online]. Available: <https://ssrn.com/abstract=5240116>
54. "Transforming renewable energy and educational technologies through AI, machine learning, big data analytics, and cloud-based IT integrations," *International Journal of Engineering and Computer Science*, vol. 10, no. 12, pp. 25572–25585, 2021, doi: 10.18535/ijecs.v10i12.4665.



55. V. B. Komaragiri, “Machine learning models for predictive maintenance and performance optimization in telecom infrastructure,” Journal of International Crisis and Risk Communication Research, pp. 141–167, 2021. [Online]. Available: <https://jicrcr.com/index.php/jicrcr/article/view/3019>
56. S. Paleti, “Cognitive core banking: A data-engineered, AI-infused architecture for proactive risk compliance management,” Dec. 2021.
57. H. K. Sriram, “AI-driven optimization of intelligent supply chains and payment systems: Enhancing security, tax compliance, and audit efficiency in financial operations,” Mathematical Statistician and Engineering Applications, vol. 71, no. 4, pp. 16729–16748, 2022. [Online]. Available: <https://philstat.org/index.php/MSEA/article/view/2966>
58. K. Chava, C. Chakilam, S. R. Suura, and M. Recharla, “Advancing healthcare innovation in 2021: Integrating AI, digital health technologies, and precision medicine for improved patient outcomes,” Global Journal of Medical Case Reports, vol. 1, no. 1, pp. 29–41, 2021.